

Gas monitor

MX 32

■ ■ ■ 1 or 2 independent channels

■ ■ ■ Easy installation

■ ■ ■ Flexible programming

■ ■ ■ Wall mounted

■ ■ ■ Compliant with European Standards



CE ATEX

OLDHAM
Group

Gas detection / stack gas monitoring



Example : print industry

■ ■ ■ Together we'll make your operations safe

Oldham has designed the MX 32, a measurement and alarm unit that is perfectly suitable for the protection of your equipment and personnel in atmospheres which may contain flammable and toxic gases. Available with one or two separate channels, the MX 32 offers you tailor-made detection capabilities and exceptional programming possibilities with its range of Oldham detectors.

Its purchase and operating costs are enhanced by its easy installation and great operating flexibility.

■ ■ ■ 2 in 1 performance

The MX 32 measurement and alarm unit for the detection of combustible or toxic gases is, in fact, a "dual single-channel" system. It is available with one measuring channel and an extension. This operating flexibility ensures the protection of your personnel and your plant.

Increased safety

The MX 32 is equipped with two independent, instantaneous alarm thresholds.

Remarkable reliability

SMC and microcontroller technologies guarantee the quality of measurement processing, the user interface and the triggering of alarms. Protection against electromagnetic interference is built in.

Compliance with standards

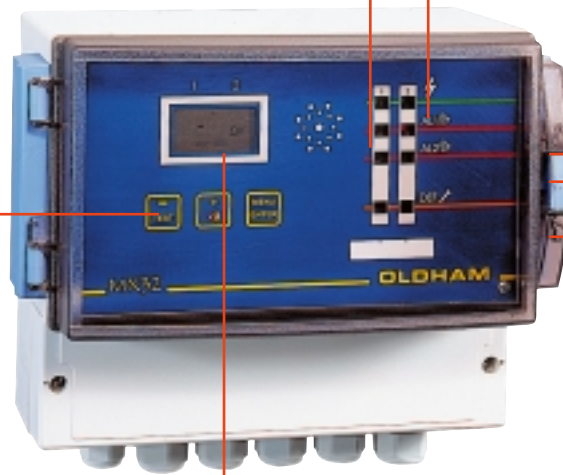
The MX 32 complies with European standards 50054, 50081, 50082 and with low-voltage directives.



Enhanced ergonomics

User-friendly front panel

- "Power on" indicator lights
- Buzzer
- Manual or automatic acknowledgement
- 3 control keys



Variety of connections

- Wheatstone bridge detectors
- 4-20 mA detectors (2 or 3 wires)
- Fire detectors
- Flame detectors

Easy installation

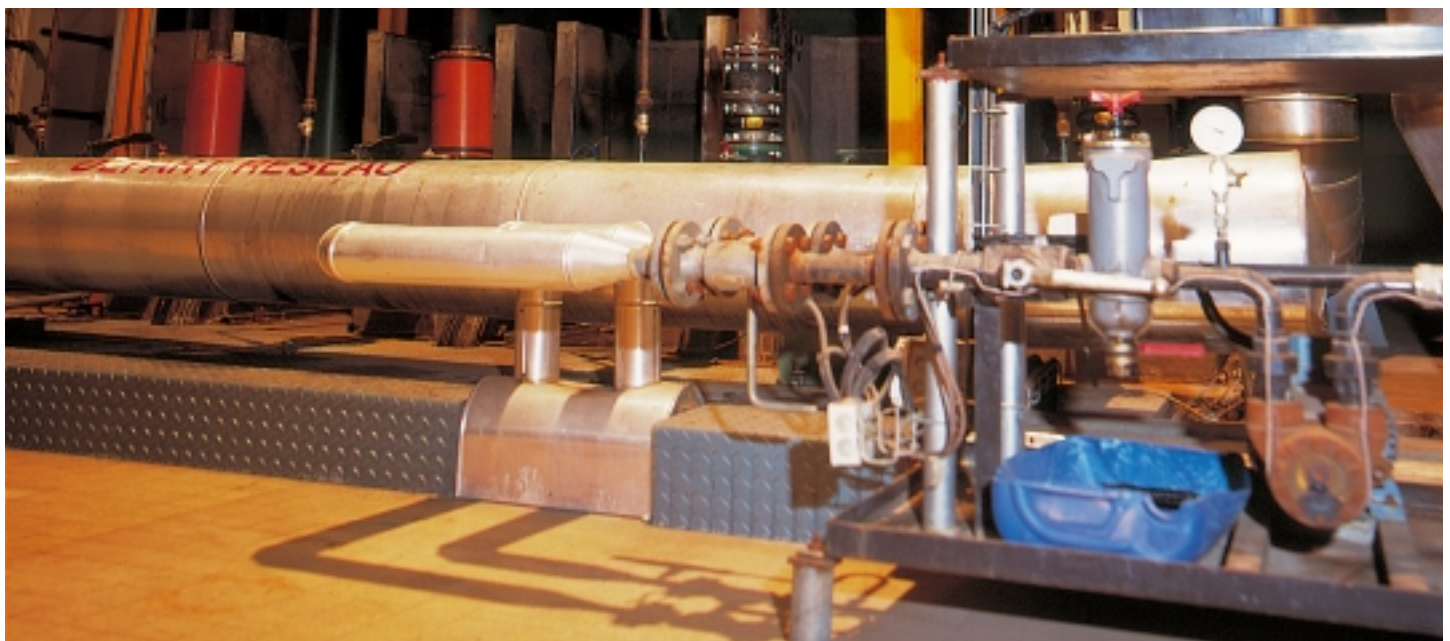
- Small-sized wall-mounted box, that is easy to install
- Protected front face
- Sealed polycarbonate box (IP 66)

Simple operation

- Liquid crystal display panel
- Simple programming by keypad
- Power supply 230 V AC or 115 V AC (24 V DC back-up)

High safety

- Visual alarms
- Red LED for two gas alarm thresholds per channel
- Yellow LED for fault alarm per channel



Example of application : boiler plant

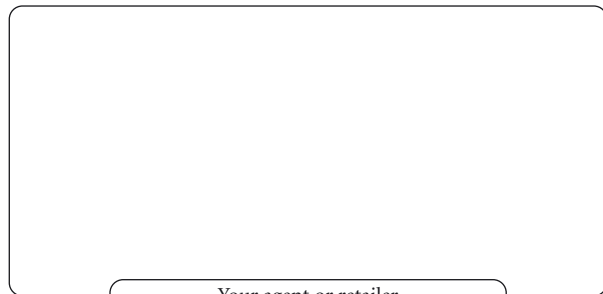
Technical characteristics

| | |
|----------------------|--|
| Manufacturer : | • OLDHAM SA |
| Function : | • Gas monitor |
| Presentation : | • Wall-mounted box, Noryl type |
| Capacities : | • 1 or 2 channels |
| Measurement : | • Continuous |
| Display : | • Liquid crystal, fixed or scrolling |
| Alarms : | • 2 independent alarm thresholds per channel • Individual programming, by increasing or decreasing • Manual or automatic acknowledgement |
| Visual alarms : | • 2 red LED + gas alarms per channel • 1 yellow LED fault per channel |
| Audio alarm : | • Buzzer |
| Relays : | • 2 gas alarm relays per channel • One common relay for faults • Type of contact : NO or NC, programmable by jumpers |
| Power supply : | • 115 V or 230 V AC • 24 V DC |
| Power consumption : | • 30 W |
| Relay max. resistive | |
| Breaking capacity : | • 2 A / 230 V AC / 30 V DC |
| Weather protection : | • IP 66 |

Detector connections per channel

| | |
|---------------|---|
| Bridge type : | • 1 detector : maximum distance 300 m (3 x 1,5 mm ²) • 2 detectors : utilization of a junction box (Please consult us) |
|---------------|---|

Guaranteed 2 years except consumables (cells, filters)



Your agent or retailer

Winter- Oldham group
German plant

☎ (49) 231 924 10
☎ (49) 231 924 125
info@winter-gmbh.com

OLDHAM
Italia

☎ 011-3801371
☎ 011-3806613
info@oldham.it

OLDHAM
Česká Republika

☎ 420 234 622 222/3
☎ 420 234 622 220
oldham@oldham.cz

OLDHAM
Romania

☎ / ☎ (40) 21 312 37 56
oldham@fx.ro

OLDHAM
Switzerland

☎ (41) 26 652 51 18
☎ (41) 26 652 51 19
info@oldham.ch

OLDHAM
United Kingdom

☎ (44) 0 1782 562002
☎ (44) 0 1782 564414
sales@oldham.biz

Detector with transmitter :

- One to five 2-wire detectors, 4-20 mA
- One 3-wire detector, 4-20 mA
- Cable 3 x 1,5 mm² (32 Ω max. in loop mode)

Fire detectors :

- One to five detectors : cable 2 x 0,65 mm²

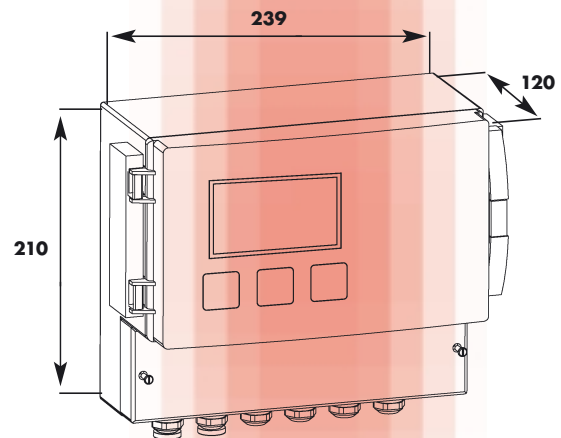
Flame detectors :

- One 3-wire detector
- Cable 3 x 1,5 mm² (4,8 Ω max. in loop mode)

Miscellaneous

| | |
|-------------------------|-----------------------|
| Weight : | • 1,750 g |
| Acknowledgement : | • Manual or automatic |
| Operating temperature : | • -20°C to +55°C |
| Relative humidity : | • 5% to 95% RH |

Complies with EMC and low-voltage directives



MX 32

OLDHAM
Group

Plant and head office : Z.I. Est - rue Orfila
B.P. 417 - 62 027 ARRAS Cedex FRANCE
Tel. : 33 3 21 60 80 80 Fax : 33 3 21 60 80 00
Web site: <http://www.oldhamgas.com>