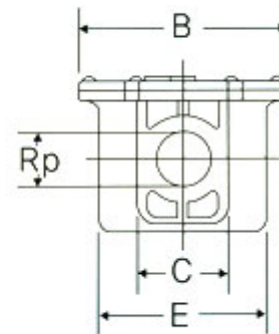
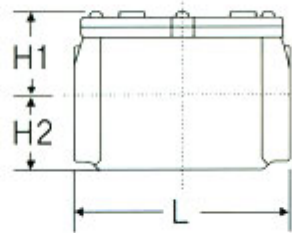


1. Gas Filter Screwed Type Specification

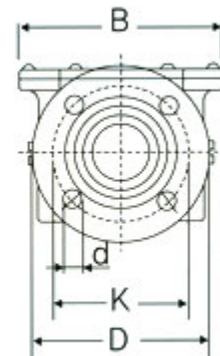
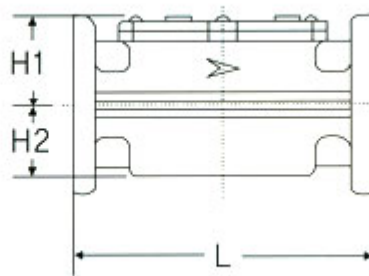
GAS-FILTER (SCREW TYPE) GAS-FİLTRE (SCKEM LİNE)



Model	connection	Max. Operating	Overall Dimensions(mm)						Weight (kg)
	(Inch) Rp	Pressure bar	L	B	H1	H2	E	C	
SJG-01	1/2	2	121	132	38	51	93	44	0.70
SJG-02	3/4	2	121	132	38	51	93	44	0.68
SJG-03	1	2	121	132	38	51	93	44	0.66
SJG-04	1 1/4	2	173	187	52	61	134	61	1.29
SJG-05	1 1/2	2	173	187	52	61	134	61	1.23
SJG-06	2	2	199	218	73	73	162	81	2.08

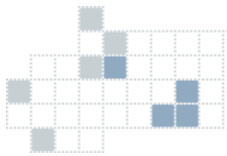
2. Gas Filter Flanged Type Specification

GAS-FILTER (FLANGE TYPE)



Model	connection (Inch)	Max.Operating Pressure bar	Overall Dimensions(mm)							Weight	
			L	B	H1	H2	D	K	d	(kg)	
SJG-DN 50	DN 50	6	250	196	96	97	165	125	18	6.37	
SJG-DN 65	DN 65	6	290	210	97	104	185	145	18	7.77	
SJG-DN 80	DN 80	6	320	244	112	103	200	160	18	9.23	
SJG-DN 100	Dn 100	6	380	273	134	107	220	180	18	12.24	

3. Gas Filter Installation



INSTALLATION



Summary

Please read this manual carefully. If you do not comply with this manual, damages may be caused to products or dangerous situations may be resulted in. An installations of this product must be done by a qualified skillful engineer. Once an installation has been completed, please perform an inspection.

Warning

Please shut off all gas supplies before an installation.

Do not remove the stopper on the product gateway until piping has been connected.

This filter must be installed so that the arrow on the product will conform to the direction of gas supplies.

Location for installation

The location should allow separations of the stopper for inspection or cleaning. The filter must be installed in a location where the stopper can be separated to replace its cartridge and it should be more than 30mm apart from high temperature walls (or objects).

Screw type

Please use care to prevent foreign materials from going into the filter during working.

Please make sure that the direction of the arrow on the exterior of this filter conforms to the gas supply direction.

Piping works should comply with ISO-1 (BS21, DIN 2999) and please use well processed tapered fittings so that no residual would be left after the works.

When connecting pipes, do not fasten the pipes or piping materials too strong, otherwise, deformations of the product (twisting) or defects in functions may be resulted in.

Flange version

Please use care to prevent foreign materials from going into the filter during working.

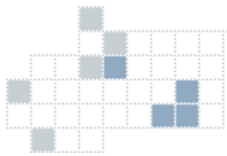
Please make sure that the direction of the arrow on the exterior of this filter conforms to the gas supply direction.

In connecting, please align the flange with the piping line and maintain appropriate distances so that the filter can be located without a damage to the gasket.

Please locate the gasket between the filter and the flange. At this time, it would be good to apply a little grease if necessary.

Please fix the filter by fastening the screws on the flanges on both sides.

4. Gas Filter Maintenance



MAINTENANCE



Please replace inner filter parts(filter) if the pressure loss between the front and back of the filter becomes more than 10mbar. It is desirable to replace them at least 1 time a year.

Replacement of filter parts

In case it is required to replace filter parts,

1. Please be sure to shut of gas supplies before replacing them.
2. Please separate the stopper by unscrewing the screws. Here, please take care so that the inside of the filter is not filled with gases.
3. Please separate the cartridge and clean up inside of the housing.
4. Replace the cartridge with a new one.
5. Please install the cartridge appropriately inside of the product. Here, please completely settle the cartridge on inside stopper and please pay attention to its direction so that the indented part of the cartridge stamped 'inlet' would go toward the entrance of the filter.
6. Please open the gas valve near the entrance slowly and please be sure to check for gas leakages from the stopper of the filter.

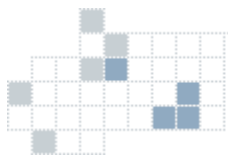
Inspection for leakages after installation

Using a good quality spray for gas leakage inspections, please apply the spray to all connecting areas and gasket areas of piping.

Please get the machine started and check for any foam.

Here, if any foam has been found in any connecting area, please connect the piping again completely. The leakage from gasket areas usually stop by fastening of connecting screws and if the leakage still continues, please replace the gasket and connect again.

5. Gas Filter Volume Curve



VOLUME CURVE



Summary

Please apply operation oil amount when reading volume curves. The pressure loss ΔP should be added to the absolute pressure in the unit of bar. This is because temperature fluctuations are considered. The pressure loss should not be over 10mbar.

Example of calculation

Excess Gas Pressure 4bar

Operation oil amount

150 m³/h LNG

Choice of filter

SJG.DN65(Flange type)

Pressure loss

1.7bar

Practice pressure loss

$\Delta P = 5(\text{over pressure} + 1) \times 1.7\text{mbar} = 8.6\text{mbar}$

PRESSURE LOSS - PERDITE DI CARICO Δp (mbar)

