



GOLDEN

Electric-heating Hot Water Flash Vaporizer
Electric-heating Hot Water Flash Vaporizer

**Green Energy
for Good
Environment**



GOLDEN VAPORIZER

THAI PETROLUUM EQUIPMENT & CONSTRUCTION CO., LTD.

Features

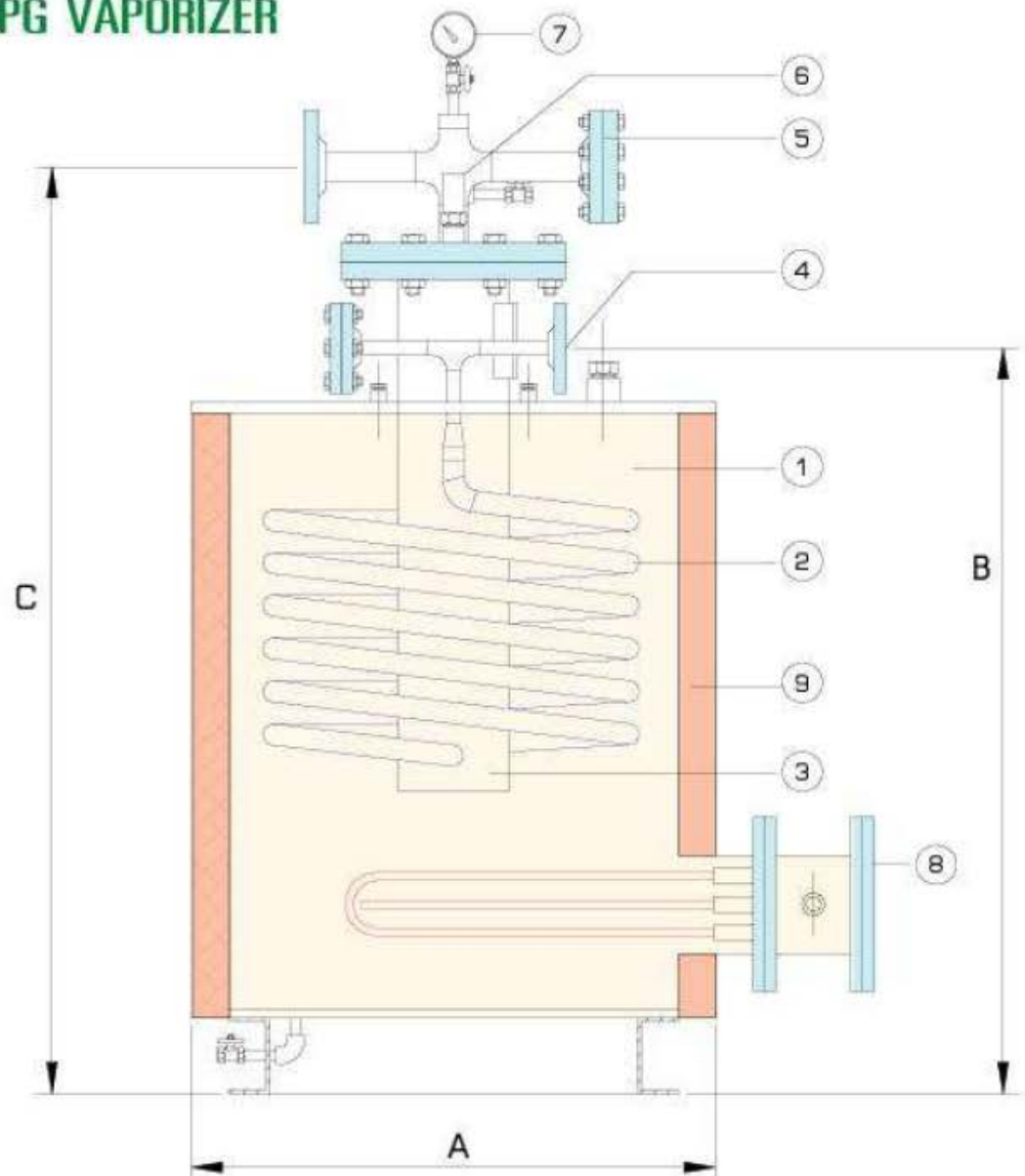
Newly Developed High-Efficiency Evaporator(Instantaneous Evaporation Method) Is Adopted.

- > The coil-style heat exchanger instantaneously vaporizes LPG(liquid) by having it pass through the small tube at a high speed. This heat exchanger is highly efficient, compact and light.
- > The instantaneous evaporation method leaves no LPG, and thus superheating supplies the perfect gas hard to re-liquefy.

Through going Measures Are Taken for Safety.

Unique Design to Ensure Convenience for Maintenance.

EX-SERIES LPG VAPORIZER



MATERIAL

No.	PART NAME	MATERIAL SPECIFICATION
1	VESSEL TANK	ST.:DIN 1542 (4.59)
2	HEAT EXCHANGE COIL	API 5L #80 SEAMLESS
3	GAS HEADER	API 5L #80 SEAMLESS
4	LIQUID INLET	API 5L #80 SEAMLESS
5	VAPOR OUTLET	API 5L #80 SEAMLESS
6	SAFETY RELIEF VALVE	"FISHER" (H-SERIES)
7	PRESSURE GAUGE	SS304 , 0-300 PSI
8	HEATER	FLAME PROOF
9	WALL INSULATOR	FIBERTEX-350 ROCKWOOL

Specifications

Model		TN-50 EX	TN-100 EX	TN-150 EX	TN-200 EX	TN-300 EX
Vaporization Capacity		50kg/h	100kg/h	150kg/h	200kg/h	300kg/h
Type		Electric Vaporizer				
Heating Method		Electric-heating Hot water				
Heat Source	Heater	18kW	24kW	36kW	48kW	48kW
	Electricity	AC380V 3Phase				
	Ampere	27	36	54A	72A	72A
Thermostat		60~80 °C				
Prevent heatig switch		80 °C				
Safety relief valve Setting pressure		250 PSI				
Connection	Liquid inlet	20A(Rc3/4)				
	Gas outlet	20K 32A				
Design pressure		375 PSI				

Description of the Structre

Outline of the mechanism

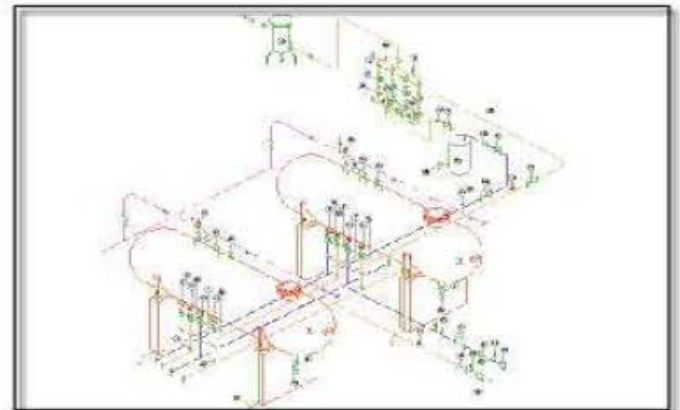
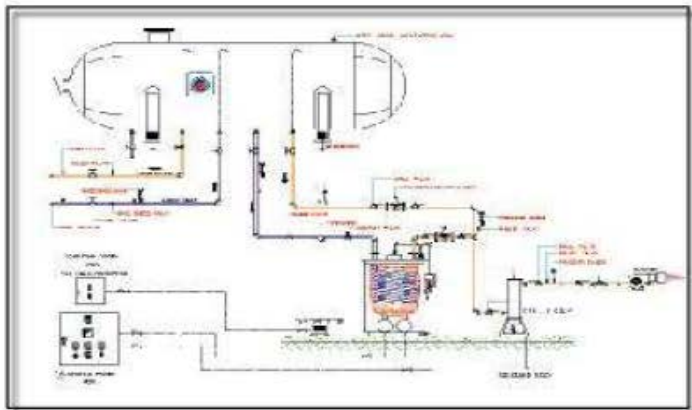
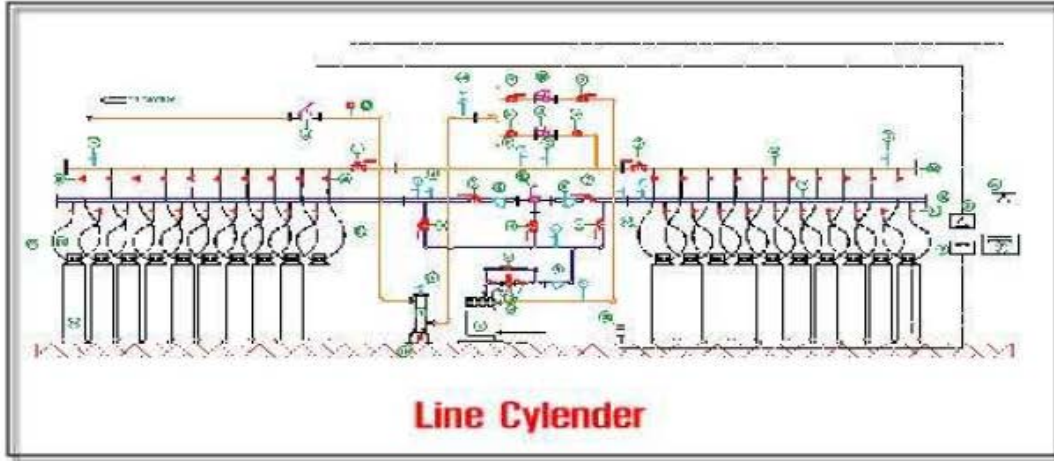
The LPG (liquid) supplied from the container passes through the liquid inlet main valve, the strainer, and the thermo valve. Then, it is decompressed by the vaporization pressure regulating valve before flushing to the evaporator. The LPG (liquid) that has flowed into the evaporator instantaneously vaporizes.

When its impurities are separated, it becomes a superheated gas. The superheated gas is sent to the pressure regulator, where it is controlled to the prescribed pressure for supply.

When the temperature reaches higher then the predetermined level, depress the reset button to release the low temperature cut-off mechanism and "open" the thermo valve.

แบบการติดตั้ง

Liquid With Draw & LPG Gas Vaporizer



Storage Tank

